

To sublease

Globalworth Campus Building 3

Bucharest, Sector 2, 9 Dimitrie Pompeiu Blvd.

Building information

Building status	Existing
Year of construction	2020
Parking ratio	To be agreed
Total building area	35 000 sq m

Commercial terms

Office space*	after login *
Parking	after login *
Service charge*	after login *
Minimum lease term	after login *
	2026-01-10
Availability	after login *

* Asking terms for m²/month

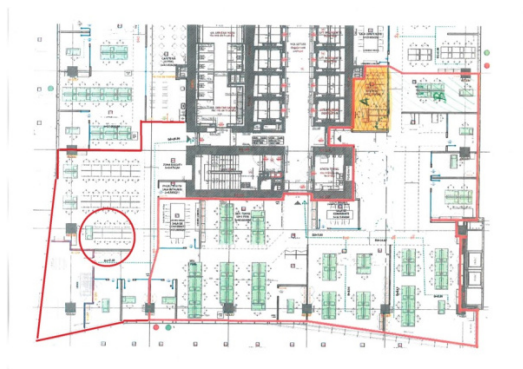
Location



Available space

Building completely leased

Typical floor plan



Contact

+40 21 302 3400

More information